

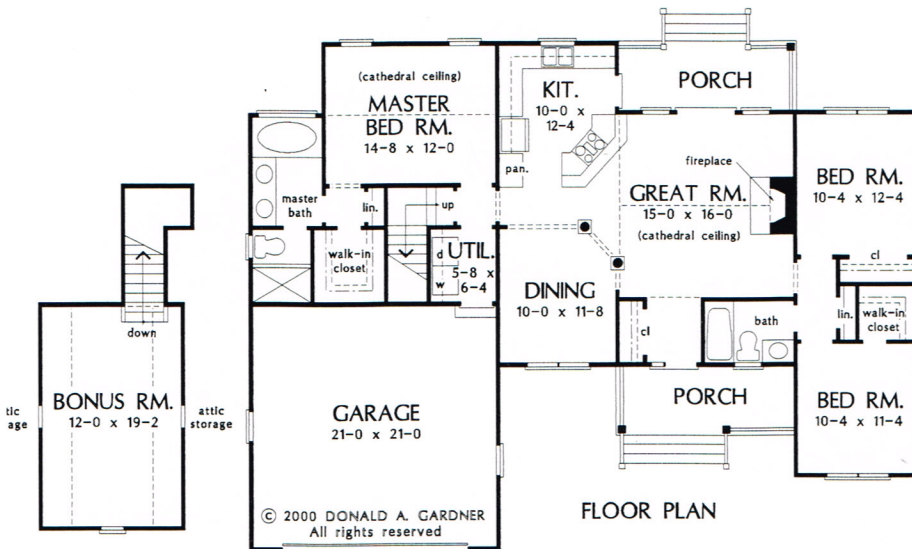
The Blakely Plan 839



© 2000 Donald A. Gardner, Inc.

This modest home makes the most of its square footage by utilizing a very open floor plan and volume ceilings to create a feeling of spaciousness. Columns add definition to the open dining room, while the great room enjoys a cathedral ceiling. Both the kitchen and the great room boast access to the relaxing back porch. A split bedroom design gives the master suite privacy from two secondary bedrooms.

Total Living Area.....1399 sq. ft.



Hunter Creek Homes, Inc.
Greenwood, DE
302-349-0805