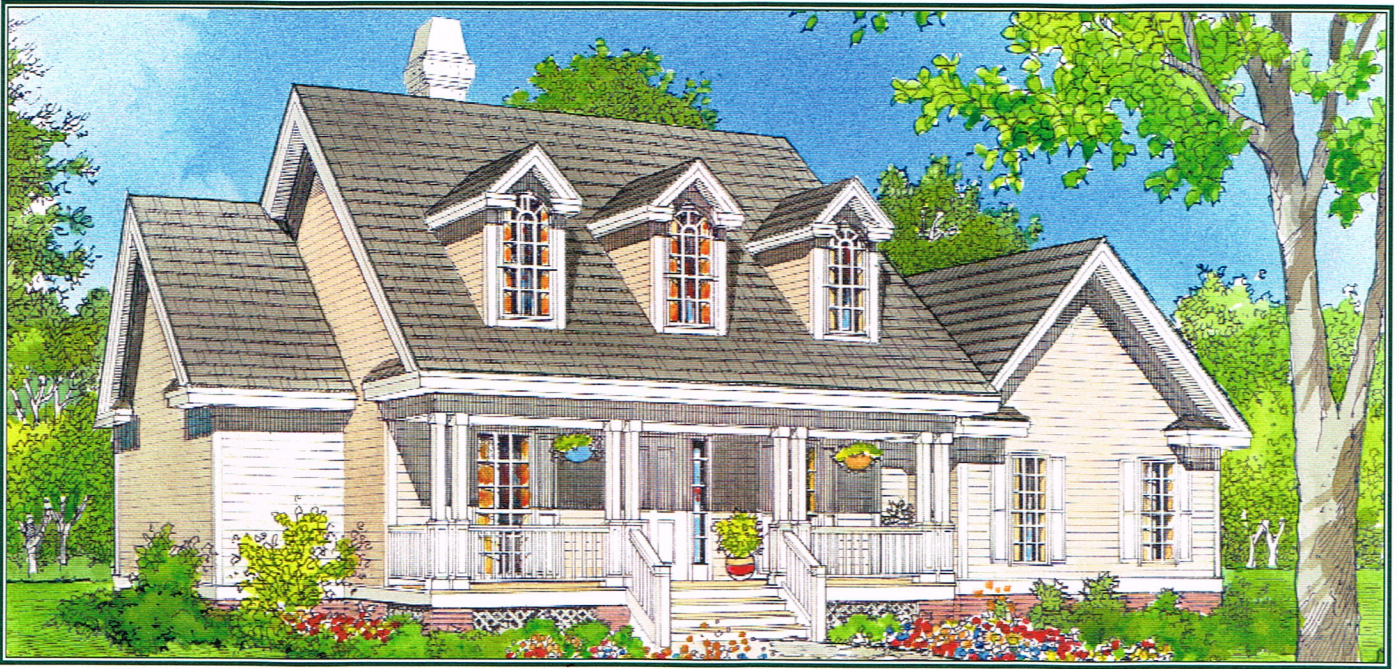
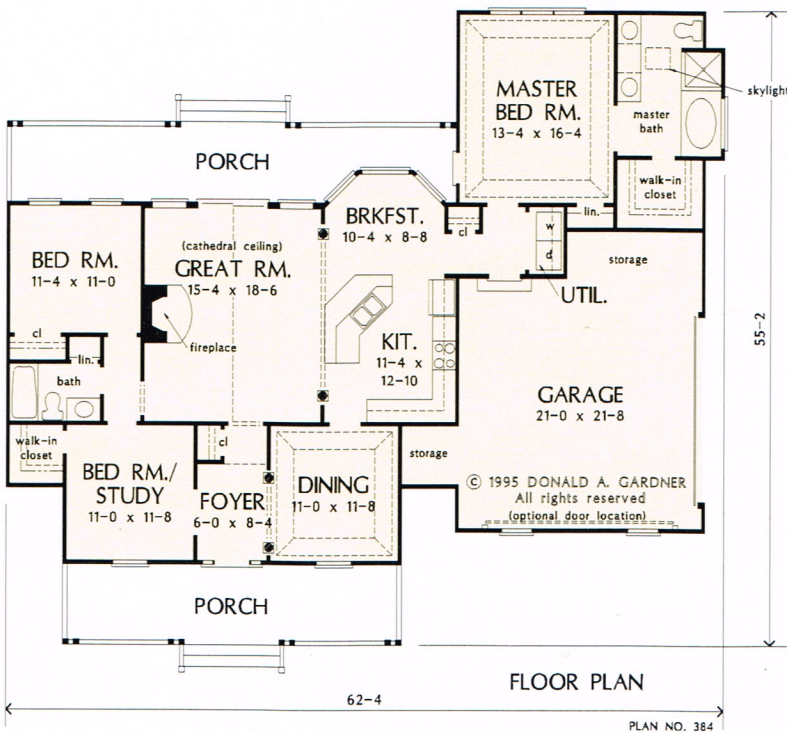


The Stratford Plan 384



© 1995 Donald A. Gardner Architects, Inc.



This country home is as beautiful from the back as it is from the front.

Porches front and back, gables, and dormers provide special charm. The central great room has a cathedral ceiling, fireplace, and a clerestory window, which brings in lots of natural light. Columns divide the open great room from the kitchen and breakfast bay. A tray ceiling and columns dress up the formal dining room. The master suite with tray ceiling and back porch access is privately located in the rear. The skylit master bath features whirlpool tub, shower, double vanity, and spacious walk-in closet.

Hunter Creek Homes, Inc.
Greenwood, DE
(302) 349-0805

Total Living Area.....1632 sq. ft.