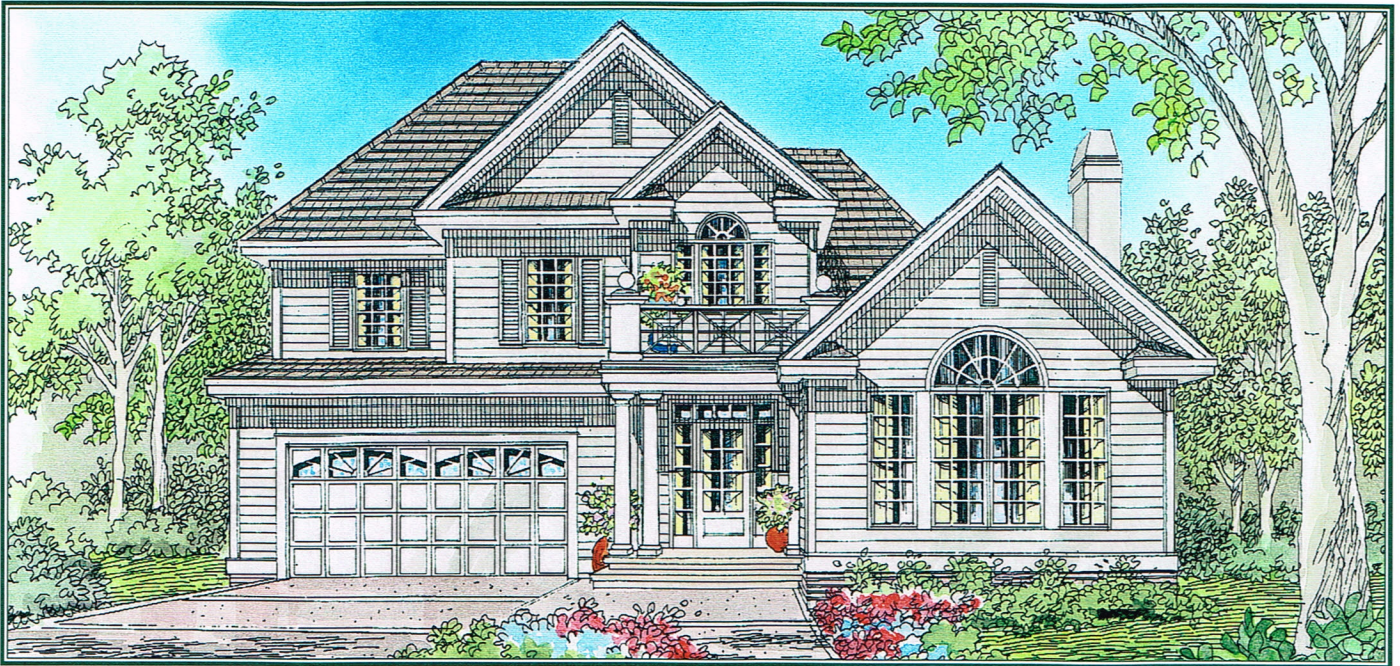
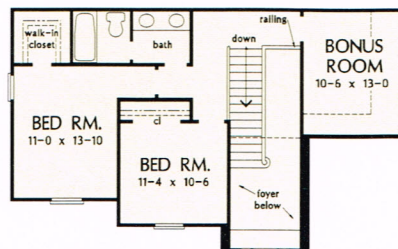
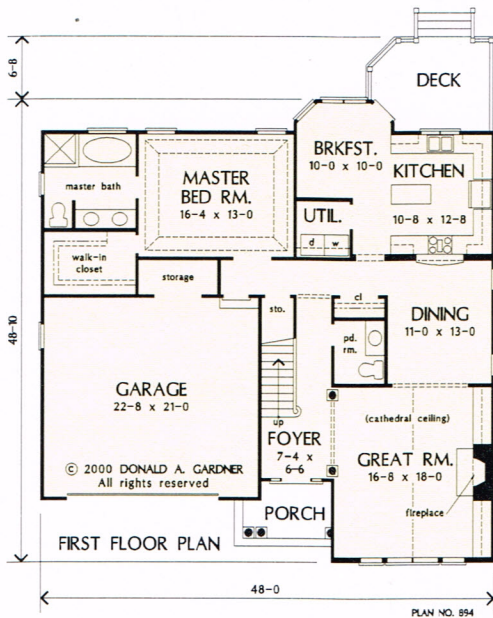


The Carlton Plan 894



© 2000 Donald A. Gardner, Inc.



For those who want an elegant façade matched with a family-friendly floor plan, this home is the perfect design. Accented with columns and capped by a cathedral ceiling, the great room features a remarkable fireplace bordered by built-ins, and a wall of windows crowned with a half circle window. The view of the fireplace can be enjoyed in the dining room, and the dining room is connected to the kitchen by a pass-thru. The breakfast nook is highlighted by a beautiful bay window and lies next to a spacious utility room. A tray ceiling in the master bedroom, a bonus room upstairs, and the convenient location of both the powder room and coat closet are features that make this plan more enjoyable while promoting easy-living.

Hunter Creek Homes, Inc.
Greenwood, DE
(302) 349-0805

Total Living Area.....2015 sq. ft.