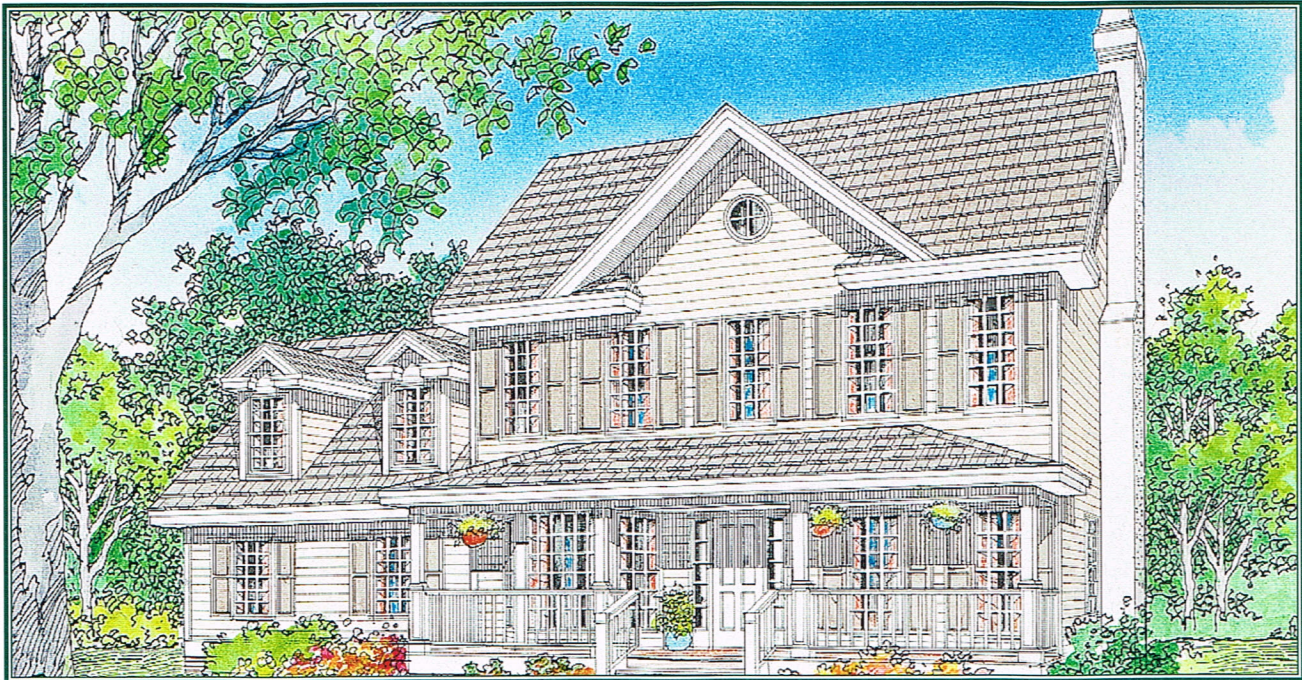
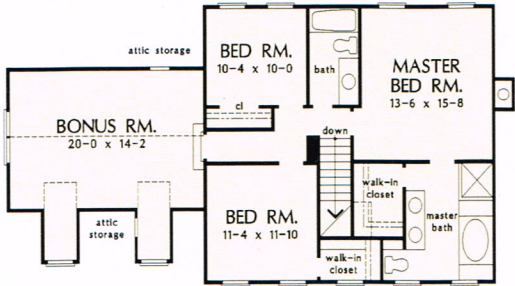
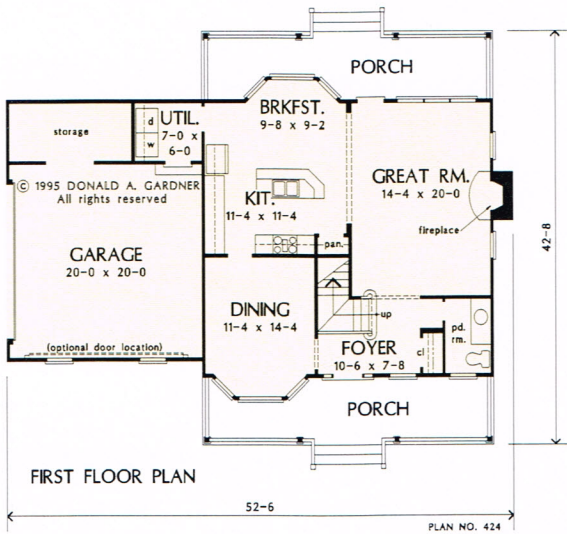


The Reidville Plan 424



© 1995 Donald A. Gardner Architects, Inc.



SECOND FLOOR PLAN

This comfortable farmhouse appeals to everyone with an easy-living floor plan that still has all of the extras. Active families will enjoy the great room, open to the kitchen and breakfast bay, as well as the expanded living space provided by a full back porch. For narrower lot restrictions, the garage can be modified to open in front. The second floor master suite contains a walk-in closet and private bath with garden tub and separate shower. Two more bedrooms on the second floor, one with a walk-in closet, share a full bath, and a bonus room with attic storage is just down the hall.

Hunter Creek Homes, Inc.
Greenwood, DE
(302) 349-0805

Total Living Area.....1792 sq. ft.