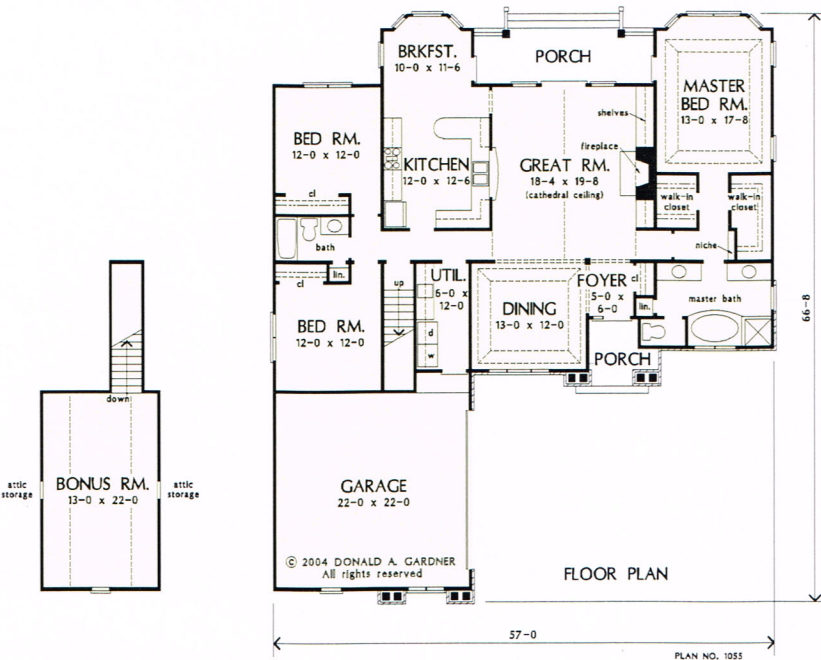


The Unison Creek Plan 1055



© 2004 Donald A. Gardner, Inc.



A stone base, columns and gables create an abundance of curb appeal. Siding provides a low-maintenance exterior, so less time will be spent on upkeep. A courtyard entrance to the garage helps the house make the most of smaller lots. Inside, the gathering rooms are open to each other, providing a natural traffic flow in a circular pattern. A cathedral ceiling, fireplace and built-in cabinetry highlight the great room, while a counter separates the kitchen from the breakfast nook. The master bedroom features a tray ceiling, bay window and French door leading to the rear porch. The master bath includes double vanities, a garden tub, separate shower and private privy. Two walk-in closets and a recessed shelf complete the master suite.

Hunter Creek Homes, Inc.
Greenwood, DE
(302) 349-0805

Total Living Area.....1956 sq. ft.